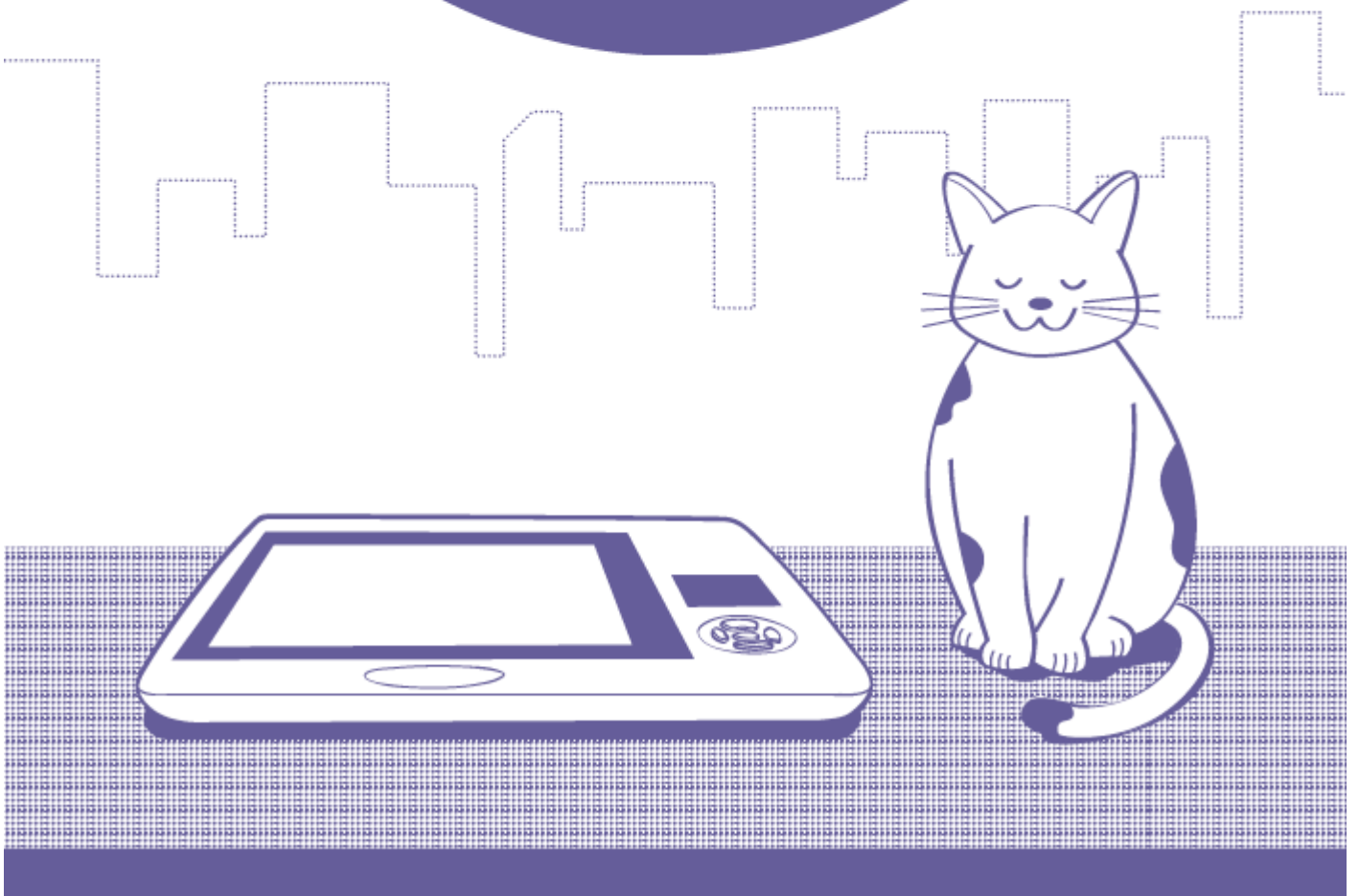


# doxie flip

scan everything



# quick start guide



<i>Getting Started</i> .....	3
<i>Scanning</i> .....	9
<i>Sync &amp; Organize</i> .....	21
<i>Care &amp; Support</i> .....	27

Doxie Flip is Apparent Corporation Part # DX70  
International Article Number (EAN) 066242505531

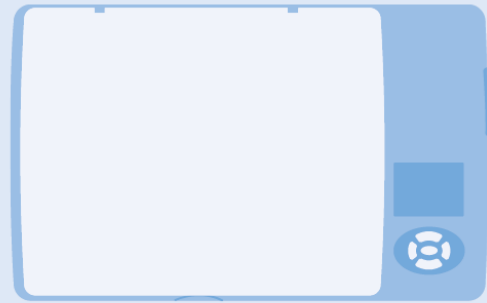
Apparent, Doxie, and Doxie Flip are our trademarks.  
Other trademarks are the property of their respective owners.  
These are not our trademarks, so no endorsements are implied.  
Some parts may represent a choking hazard to children.

Revision 2013-04. <http://www.getdoxie.com>.  
This notebook manufactured by Scout Books in Portland, Oregon USA.

APPARENT 



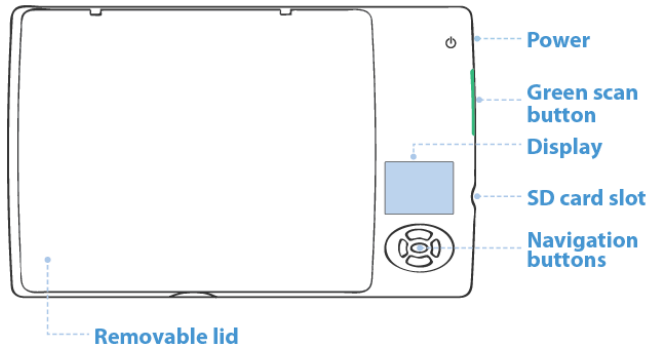
# Getting Started



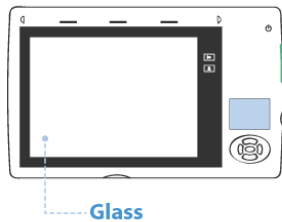
## HI, I'M DOXIE FLIP!

Doxie Flip scans your photos, illustrations, notebooks, and creative ideas – anywhere you go. Doxie creates beautiful images, then does even more to help you organize and share with included Doxie software. And because Doxie's cover is removable, what you can scan is only limited to your imagination.

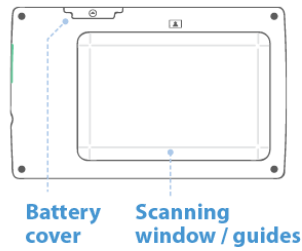
### TOP VIEW (LID CLOSED)



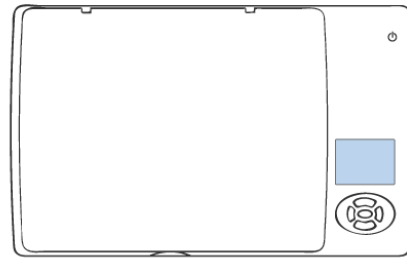
### TOP VIEW (LID OFF)



### BOTTOM VIEW



## WHAT'S IN THE BOX?



Doxie® Flip mobile scanner

This helpful guide

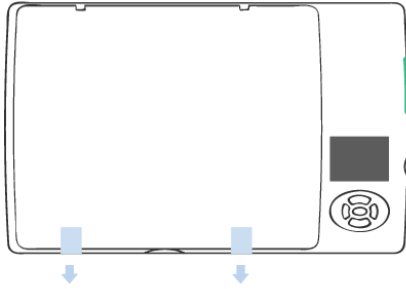
AA batteries (pre-installed)

USB SD card reader

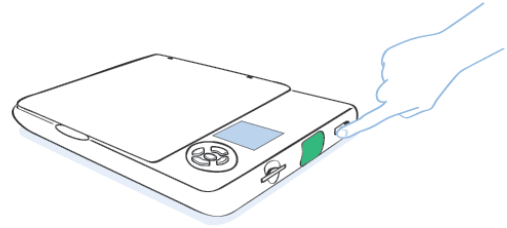
SD card (pre-installed)

# SETUP

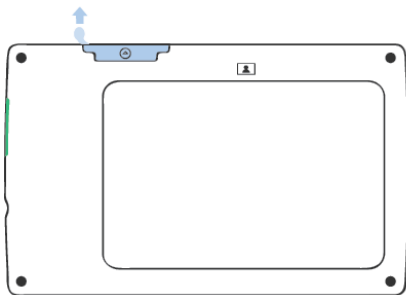
- 1 **UNPACK DOXIE**  
Remove Doxie's protective plastic and tape.



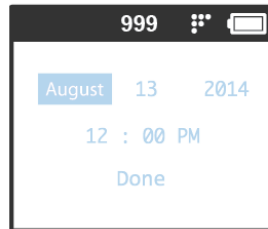
- 3 **POWER ON**  
Slide the power switch on the right side of the scanner (near the green scan button) and **hold it for a moment** to turn on Doxie.



- 2 **ACTIVATE BATTERIES**  
Doxie comes ready to scan with pre-installed AA batteries. Gently pull the small tab from the battery door to activate the batteries.



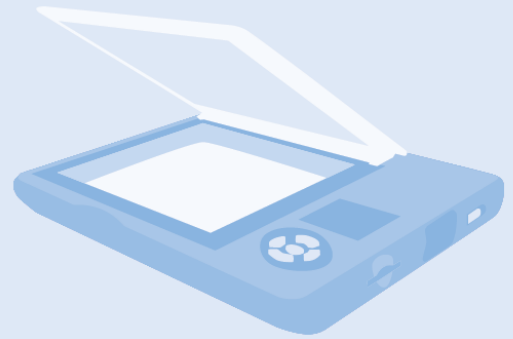
- 4 **SET DATE & TIME (optional)**  
The first time you power on Doxie, you'll be prompted to set the time. Use the arrows to set values, then select Done with the center button when finished.



- 6 **GETTING STARTED**

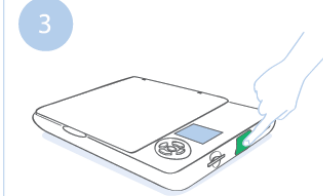
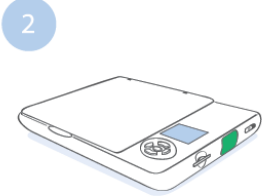
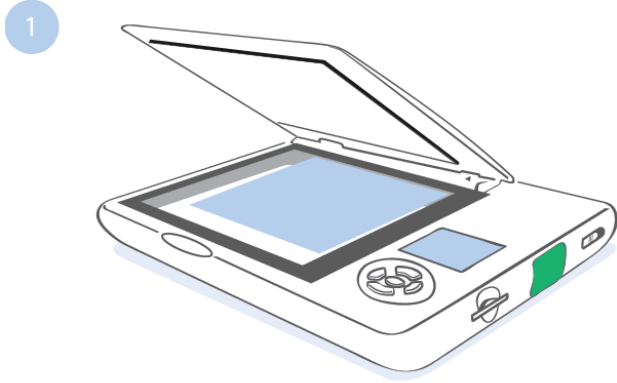
- 7 **GETTING STARTED**

# Scanning



## HOW TO SCAN

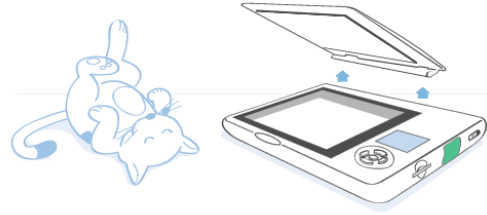
Put an object on Doxie's glass – face down – then close the lid and push the green scan button. There's an alignment guide at the upper right corner of the cover, like a photocopier. Align your object to this corner to ensure straight scans.



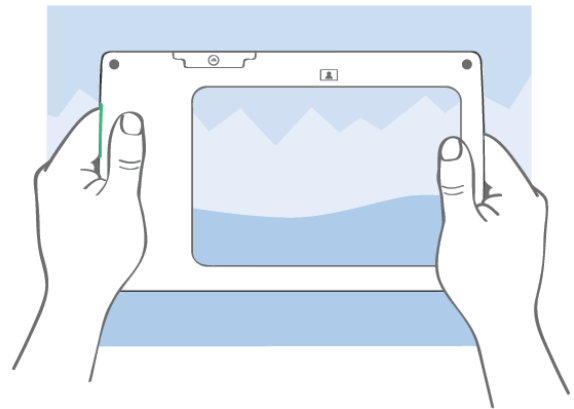
10 SCANNING

## FLIP OVER

**Doxie's lid is removable, so you can easily scan notebooks, photos in albums, framed prints, and objects.** There's a plastic window on the back of the scanner to see your original. To scan flipped, simply remove Doxie's lid by pulling it upward – there are three tabs holding it in place.

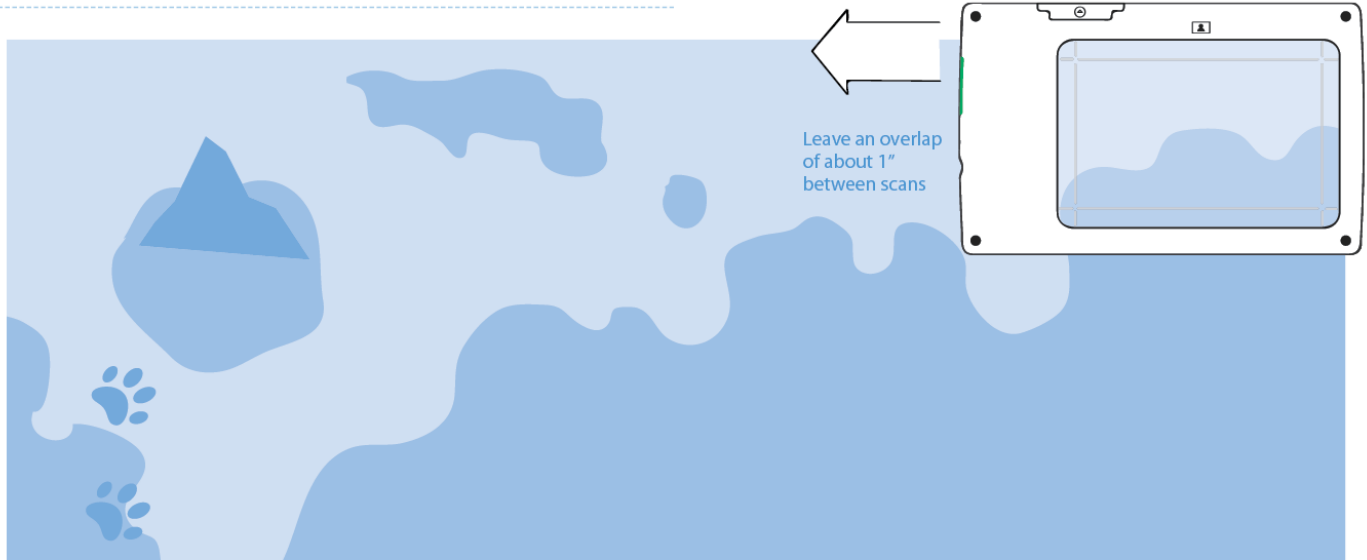


Flip Doxie over, align it with your original while looking through the plastic window, then push the green scan button. Be sure to keep Doxie still – once the motor stops, you can move the scanner again.



SCANNING 11

## OVERLAPPING SCANS



Some originals are too big for Doxie's scanning area. Doxie Flip isn't intended to replace a traditional letter/A4 document scanner, but has been specifically designed to allow you to scan larger objects – even large spreads, posters, and fabrics – into a single, giant image.

To make this work, Doxie's software includes patented AutoStitch technology from the University of British Columbia. By making multiple, slightly overlapping scans, Doxie's software can be used to "stitch" everything together, turning all your scans into one seamless image.

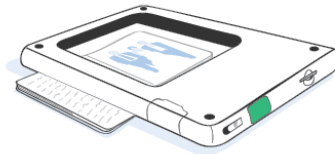
### HOW TO CREATE OVERLAPPING SCANS

Flip Doxie over, then scan multiple times in an overlapping pattern, as illustrated, to cover all of your content.

**Use the guide lines in Doxie's back window to help line up your scans.** Be sure to overlap your images so the AutoStitch feature can easily locate adjacent images. An overlap of at least 1 inch (2.5 cm) is preferred but don't worry about being too precise.

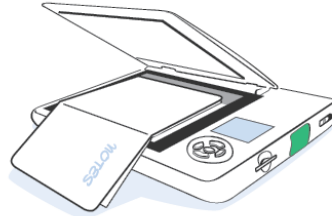


## NOTEBOOKS



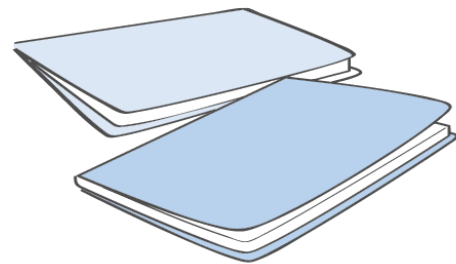
Flip Doxie over and place it on top of the page you want to scan. Look through the window to line up the page.

or



Place your notebook face down on Doxie's glass like a traditional flatbed scanner.

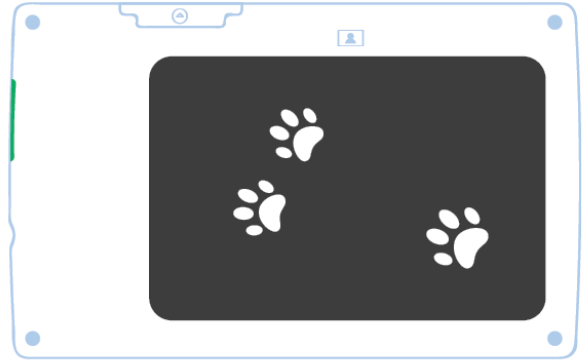
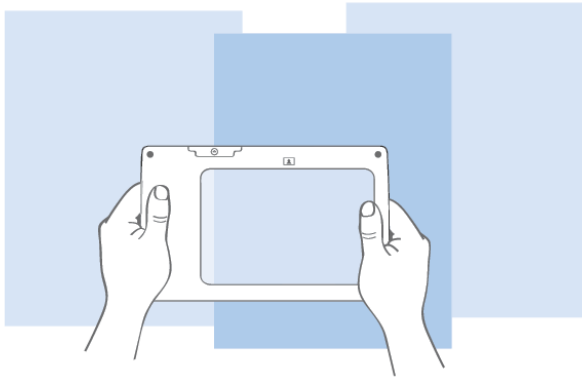
Doxie creates beautiful scans of pocket-sized notebooks from brands like Field Notes, Scout Books, and Moleskine. Doxie's included software has options to control brightness, contrast, cropping, and more – so you'll always get a great scan.



## CREATIVE SCANNING

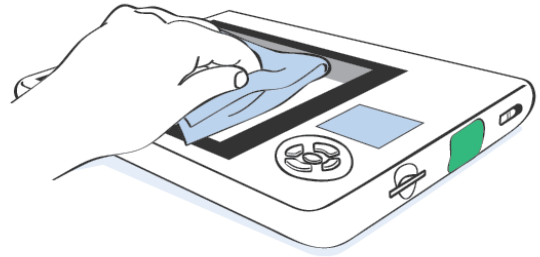


What you can scan is only limited to your imagination, thanks to Doxie's small size, cordless operation, stitching features, and removable lid. Scan posters, collages, textured surfaces, household objects, or even your nosy cat. We're sure you'll find countless creative ways to use Doxie.



Try scanning objects in the dark (with the lid off), surfaces, textures, and other types of objects.

**If you scan something that's dirty or wet, be sure to clean Doxie completely before storing.** Doxie isn't water-tight, so keep anything you're scanning entirely on the glass surface. Be careful scanning rough textures so you don't scratch the glass surface.

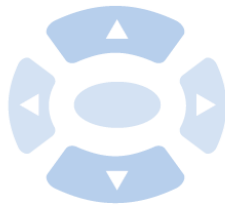
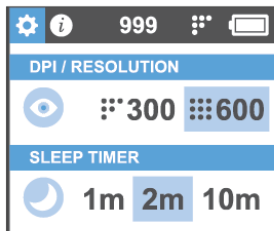


## DISPLAY & OPTIONS

When Doxie turns on, you'll see the Home Screen with the Doxie logo, along with a status bar.



You can access the Settings and Help menus by pushing the up arrow. Choose the menu you want by moving left or right, then use the arrows and center button to select and change options.



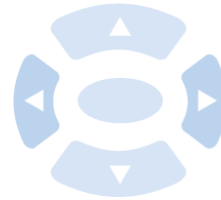
## SETTINGS

- 300 RESOLUTION**  
Resolution is a measure of the quality of your scan; higher resolutions will increase image quality but will result in slower scanning speeds and larger files. 300 dpi is Doxie's default.
- 600**



- SLEEP TIMER**  
Doxie turns off automatically when you're not using it. Two minutes is Doxie's default.

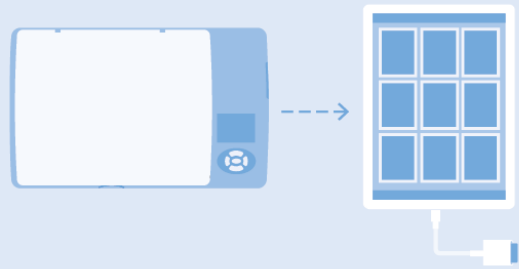
## REVIEWING SCANS



Doxie lets you quickly review scans, like a digital camera. From the Home Screen, push the left and right arrow to navigate between the scans. This is just for a quick review – if you want to zoom in or delete images, do so after importing to your computer.

**Doxie's review mode can't display images that come from other scanners or digital cameras.** If your SD card has images from other devices on it, you'll see an error message for each of these images. Push the arrow again to continue reviewing.

# Sync & Organize



## Mac & PC

When you're ready to save and share your scans on your computer, **install Doxie's app from [www.getdoxie.com/start](http://www.getdoxie.com/start)** – think of the software as an inbox for your scans.

### A Import

Remove Doxie's SD card – push it in and it pops out. Insert into your computer, open the Doxie app, then click Import. If you don't have an SD card slot, Doxie includes an SD card reader.

### B Organize

Browse and organize scans. Double-click to zoom in, rotate, and adjust.

### C Staple

Create multi-page documents by shift-selecting scans, then click Staple to combine them into one file.

### D Stitch

Stitch multiple, adjacent scans together by shift-selecting scans, then click Stitch to process them into one seamless image.

### E Save

Save scans to your computer as JPEG, PNG, or PDF files. JPEG is the most common photo format and is also ideal for uploading to Facebook and other social media services.

### F Send

Send scans to local apps like Evernote, Acrobat, and iPhoto.

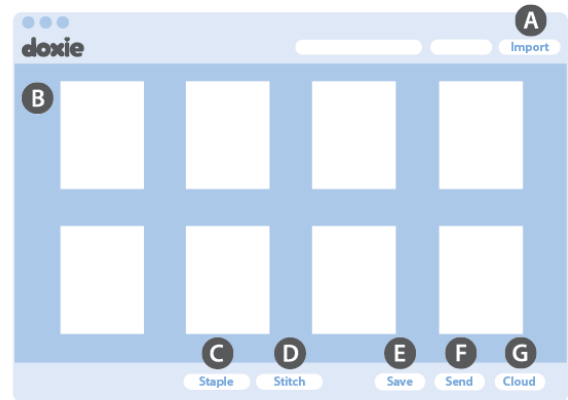
### G Cloud

Upload scans to online cloud services like Dropbox and Flickr.



## Before you import scans...

Download and install Doxie's companion app:  
**[www.getdoxie.com/start](http://www.getdoxie.com/start)**



## iPad

To sync scans to your iPad, you need Apple's iPad Camera Connection Kit (for iPads with a 30-pin connector) or Lightning to SD Card Camera Reader (for iPads with a Lightning connector). Both are available from the Apple Store and other Apple resellers.

### 1 Connect & Insert

Connect the iPad SD Card Reader to your iPad, then insert the SD card containing your scans.

### 2 Review & Import Scans

The Photos app will open automatically in the Camera pane. Here you'll see your scans and import options.

### 3 Keep or Delete Scans

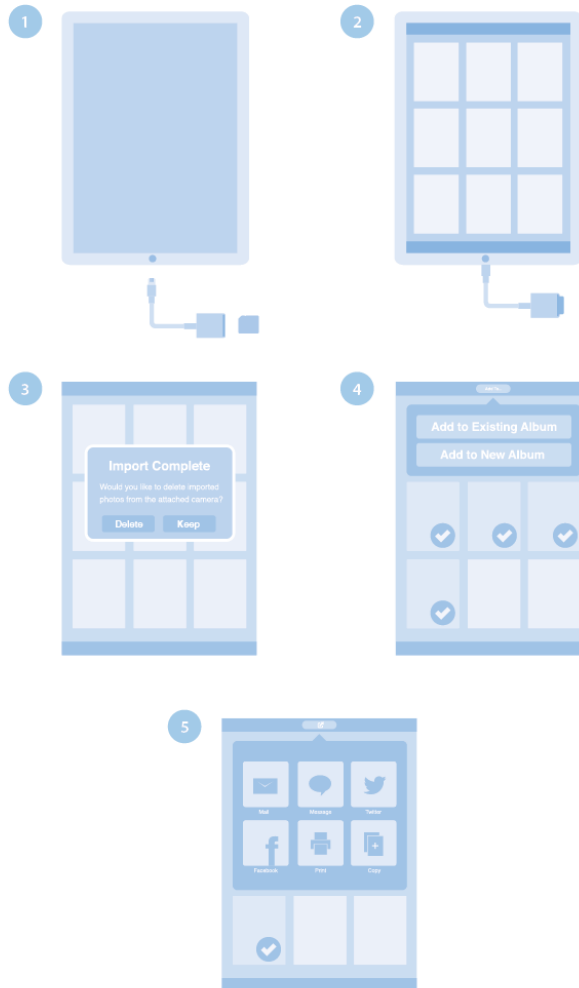
When the import is complete, you have the option to keep or delete the scans on your SD card. If you don't plan to import them to another device, you can delete them from your SD card since they're now stored on your iPad.

### 4 Organize Scans

Once scans are imported, you can rotate, edit, and organize them within the Photos and Albums panes.

### 5 Share & Send

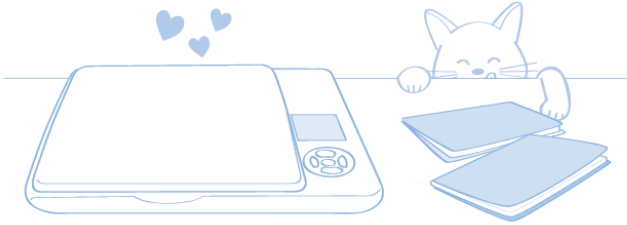
To send, print, or e-mail scans, select the scan you want to share, then tap the Share button within the Photos app.



# Care & Support

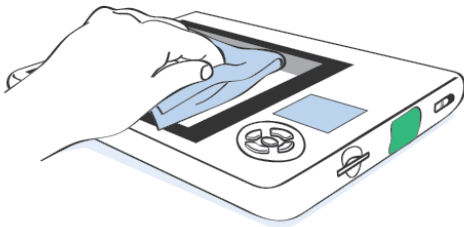


## CLEANING & CARE



Doxie Flip is a mobile flatbed scanner with multiple moving parts. Treat Doxie with care.

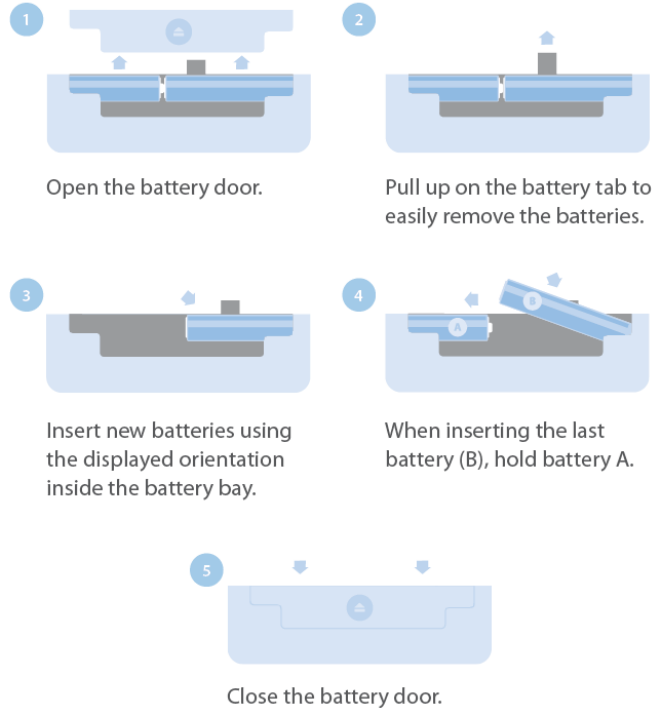
**You should always transport Doxie with the lid on** – you'll want to avoid scratching or breaking the glass. The window on Doxie's bottom is made of plastic – scratching this window will have no effect on your scans.



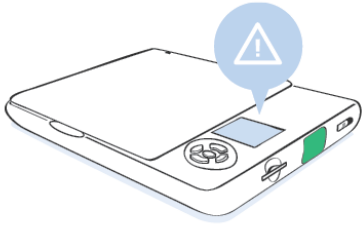
Clean Doxie's glass scanning area with a small microfiber cloth. You can also use a glass cleaning solution, but choose one that doesn't leave streaks behind. Doxie's plastic surfaces should be cleaned with a microfiber cloth and a dab of warm water.

## REPLACE BATTERIES

Doxie will tell you when the batteries need to be replaced. Open the battery door, remove the batteries, and insert new ones by following the steps below. You can use alkaline or Ni-MH rechargeable batteries (we recommend Sanyo eneloop brand).







### UNABLE TO SHOW IMAGE

Doxie can only show images that were created with Doxie Flip. See page 19.

### NO READABLE FILES

You haven't scanned anything to display yet.

### SD CARD NOT FOUND

Doxie needs an SD card to turn on.

### MEMORY CARD UNREADABLE

Doxie is having trouble with your SD card. Try reformatting or replacing it.

### MEMORY CARD FULL

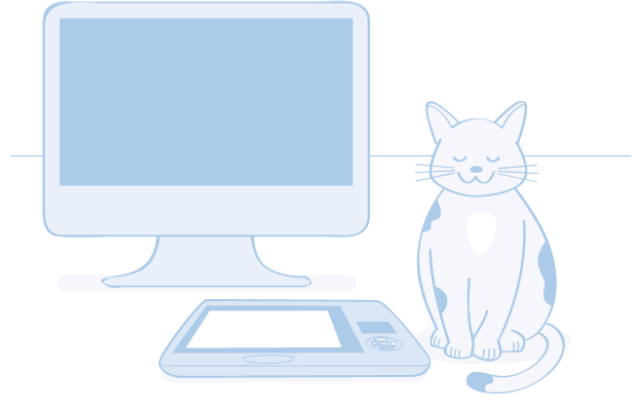
Download your scans and clear your card, or insert another SD card.

### BATTERIES TOO LOW TO SCAN

Replace batteries. See page 29.

### OTHER ERRORS

Turn Doxie off, remove and reinsert the batteries, then turn it back on. If you still can't clear the error, contact Doxie Customer Care.



We're here to help. If you need assistance setting up, scanning, importing, or going paperless, contact Doxie Customer Care at [www.getdoxie.com/support](http://www.getdoxie.com/support) for expert assistance.

## FOOTNOTES

### 1. Limited Warranty

(a) DOXIE HARDWARE. APPARENT CORPORATION warrants this Doxie Mobile Scanner ("Doxie Hardware") against defects in material and workmanship under normal use and service for one (1) year from the original date of purchase. APPARENT CORPORATION, at its option, shall repair or replace the defective Doxie Hardware covered by this warranty. Please retain dated sales information as evidence of the date of purchase. You will need it, along with a Return Authorization Number (RMA) for any warranty service.

In order to keep the Warranty in effect for the Doxie Hardware, the Doxie Hardware must have been handled and used as prescribed in the instructions included with the Doxie Hardware. THIS WARRANTY DOES NOT COVER ANY DAMAGE DUE TO ACCIDENT, MISUSE, ABUSE, OR NEGLIGENCE. THIS WARRANTY IS ONLY VALID IF THIS DOXIE HARDWARE IS USED WITH THE COMPUTER, SYSTEM, AND HARDWARE/SOFTWARE IDENTIFIED ON THE BOX, INSTRUCTIONS, OR ACCOMPANYING DOCUMENTS. (Please check product information, documents, or contact technical support for more information).

Repair or replacement, as provided under this warranty, is your exclusive remedy arising out of defective Doxie Hardware. APPARENT CORPORATION shall not be liable for incidental or consequential damages. Implied warranties of merchantability and fitness for a particular purpose for this Doxie Hardware are limited in duration to the duration of this warranty. It is your responsibility to deliver returned product to Apparent's designated RMA processing center.

DOXIE SOFTWARE. ALL DOXIE SOFTWARE AVAILABLE TO YOU IS PROVIDED "AS IS" WITHOUT WARRANTY OF ANY KIND, EITHER EXPRESSED OR IMPLIED, INCLUDING, BUT NOT LIMITED TO, THE IMPLIED WARRANTIES OF MERCHANTABILITY AND FITNESS FOR A PARTICULAR PURPOSE. THE ENTIRE RISK AS TO THE QUALITY AND PERFORMANCE OF THE SOFTWARE IS WITH YOU.

(b) APPARENT CORPORATION OR ANY OF ITS SUBSIDIARIES AND AFFILIATES DO NOT WARRANT THAT THE FUNCTIONS CONTAINED IN THE SOFTWARE WILL MEET YOUR REQUIREMENTS OR THAT THE OPERATION OF THE SOFTWARE WILL BE UNINTERRUPTED OR ERROR FREE. ALL DOXIE SOFTWARE, ITS FEATURES, FUNCTIONALITY, AND UPGRADES (WHEN AVAILABLE) ARE SUBJECT TO CHANGE WITHOUT NOTIFICATION TO YOU, INCLUDING THE POSSIBILITY OF THE ELIMINATION OF CERTAIN FUNCTIONS.

### 2. Limited Remedies

IN NO EVENT WILL APPARENT CORPORATION OR ANY OF ITS SUBSIDIARIES OR AFFILIATES BE LIABLE TO YOU FOR ANY DAMAGES, INCLUDING ANY LOST PROFITS, LOST SAVINGS, OR OTHER INCIDENTAL OR CONSEQUENTIAL DAMAGES ARISING OUT OF THE USE OR INABILITY TO USE THE DOXIE HARDWARE OR DOXIE SOFTWARE EVEN IF APPARENT CORPORATION HAS BEEN ADVISED OF THE POSSIBILITY OF SUCH DAMAGES OR FOR ANY CLAIM BY ANY OTHER PARTY.

### 3. AutoStitch License

This product contains AutoStitch Software provided under Apparent Corporation's license with the University of British Columbia (protected by US Patent 6,711,293). This functionality is strictly licensed for use only with images created with the Doxie Flip mobile scanner.

Users have a non-exclusive, non-transferrable, limited license to use the AutoStitch Software within the scope of processing images captured with their Doxie Flip scanner. You are not granted any other right, title or interest in the AutoStitch Software (including the right to make improvements to the AutoStitch Software or products incorporating the AutoStitch Software), or sublicense, distribute, sell, lease, transfer or publish copies of any part of the AutoStitch Software. The same license terms for the Doxie software apply to the AutoStitch software.

### DECLARATION OF CONFORMITY

Manufacturer: Apparent Corporation, 121 Dry Ave., Cary, NC 27511 USA

Apparent Corporation declares that Doxie Flip passed all tests performed to ensure conformity with the directives set out by: EN 55022:2006+A1:2007 Class B, EN 55024:1998+A1:2001+A2:2003, IEC 61000-4-2:2001, IEC 61000-4-3:2006, IEC 61000-4-8:2001, AS/NZS CISPR 22:2006, Class B

Signed: /Travis J. Hicks/  
Chief Operating Officer, Apparent Corporation, April 8th, 2013